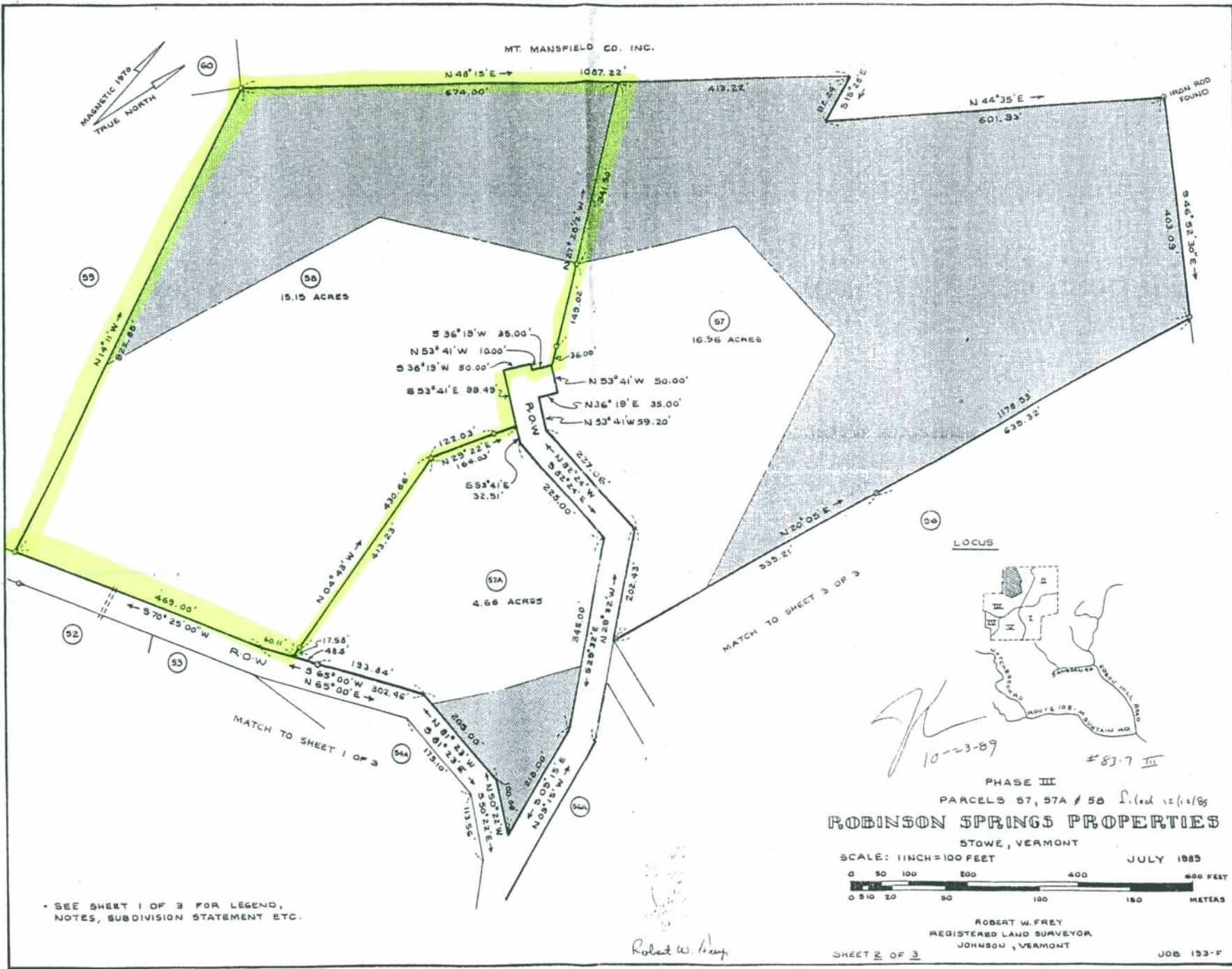


MT. MANSFIELD CO. INC.



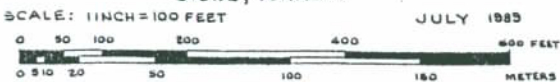
LOCUS



JK
10-23-89

#83.7 III

PHASE III
PARCELS 57, 57A & 56 Filed 12/12/85
ROBINSON SPRINGS PROPERTIES
STOWE, VERMONT



ROBERT W. FREY
REGISTERED LAND SURVEYOR
JOHNSON, VERMONT

SEE SHEET 1 OF 3 FOR LEGEND,
NOTES, SUBDIVISION STATEMENT ETC.

Robert W. Frey