

Above the Clouds ...



A S P E C T A C U L A R E S T A T E I N S T O W E , V E R M O N T



ABOVE THE CLOUDS

Stowe, Vermont

*Stowe Village 2 miles, I-89 25 miles, Burlington International Airport 35 miles,
Boston 200 miles, New York 350 miles*

Above the Clouds, a classic design found in Stowe, Vermont – a recognized world-class haven for those craving to escape from urban stress. Stowe has long attracted residents seeking outdoor activities and community spirit; they blazed ski trails, hiked the rugged Green Mountains and developed arts and culture. Still it retains the atmosphere of a New England town built around a white-steeped church, where residents greet each other and visitors with the same warmth.



From the rock ledge canyon-like approach to the massive rocks on which the home is perched, this enduring and dramatic estate is a tribute to the vision of the owners and the contributions from artists and craftspeople who worked with a commitment to local, natural materials wherever possible.







Upon entering the more than 18,000 sq. ft. residence, the quiet elegance is evident. Natural light floods the foyer, bringing the outside into every day living. The beauty of the natural rock formations and the stunning mountain views which rise from the valley below celebrate an art form no man could create.



The interior of the main living level is flanked by two wings – the east wing is entirely dedicated to the master suite, complete with sitting area, exercise room and a spacious bathroom carved from Statuario marble.



Between the east and west wings sits the dining room and the great room – a sunken affair shaped like the Steinway Grand Piano that graces one corner.







The west wing houses the library lined with black walnut throughout, offices and utilitarian sections of the residence.



The entertainment level includes a studio-quality theater with seating for 18, suitable for premier performances, opening to the mezzanine crescent shaped bar serving the inviting conversation area with wood-burning fireplace, overlooking perhaps the most popular area ...

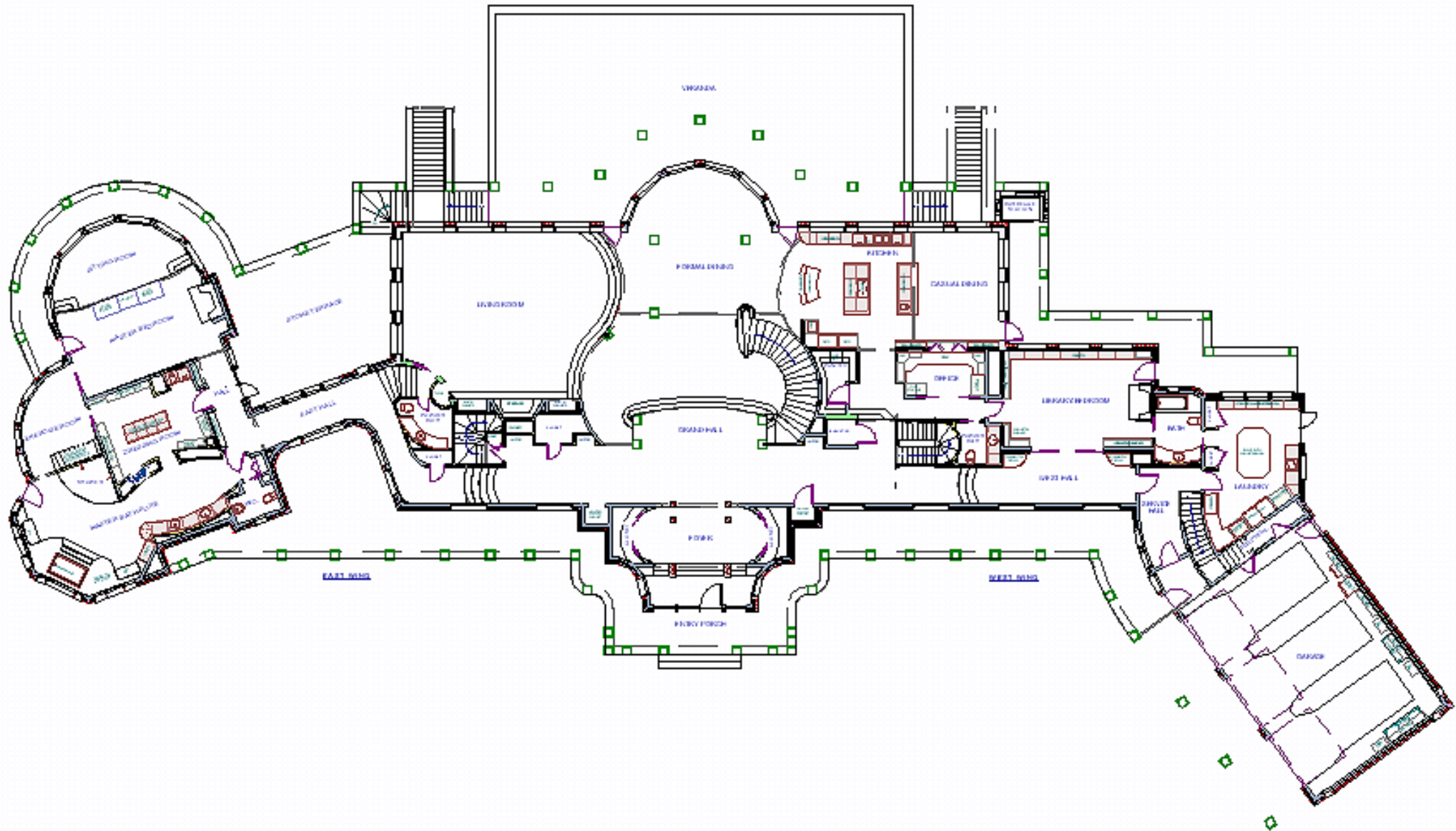




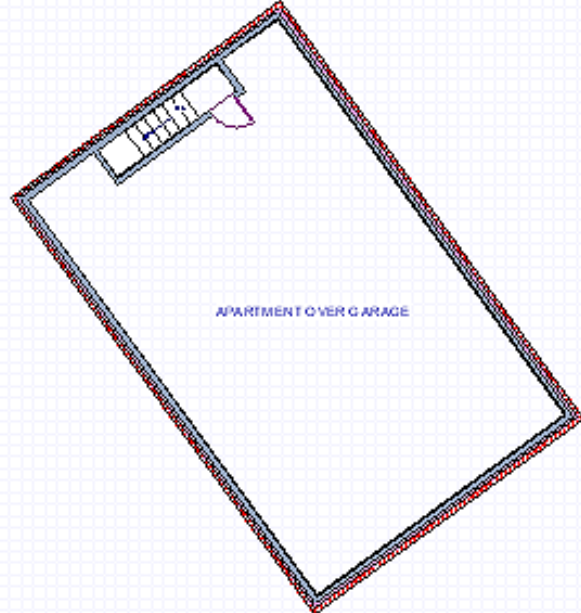
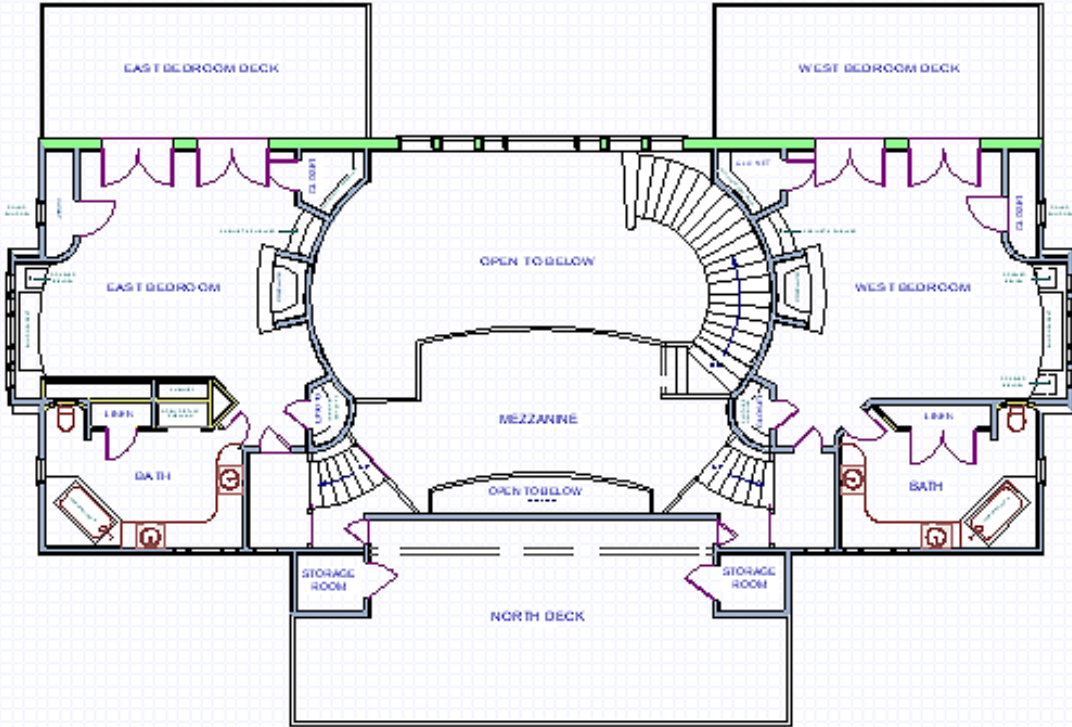
a most magnificent 23X38 indoor pool with marble surround, cascading waterfall and spa facilities.



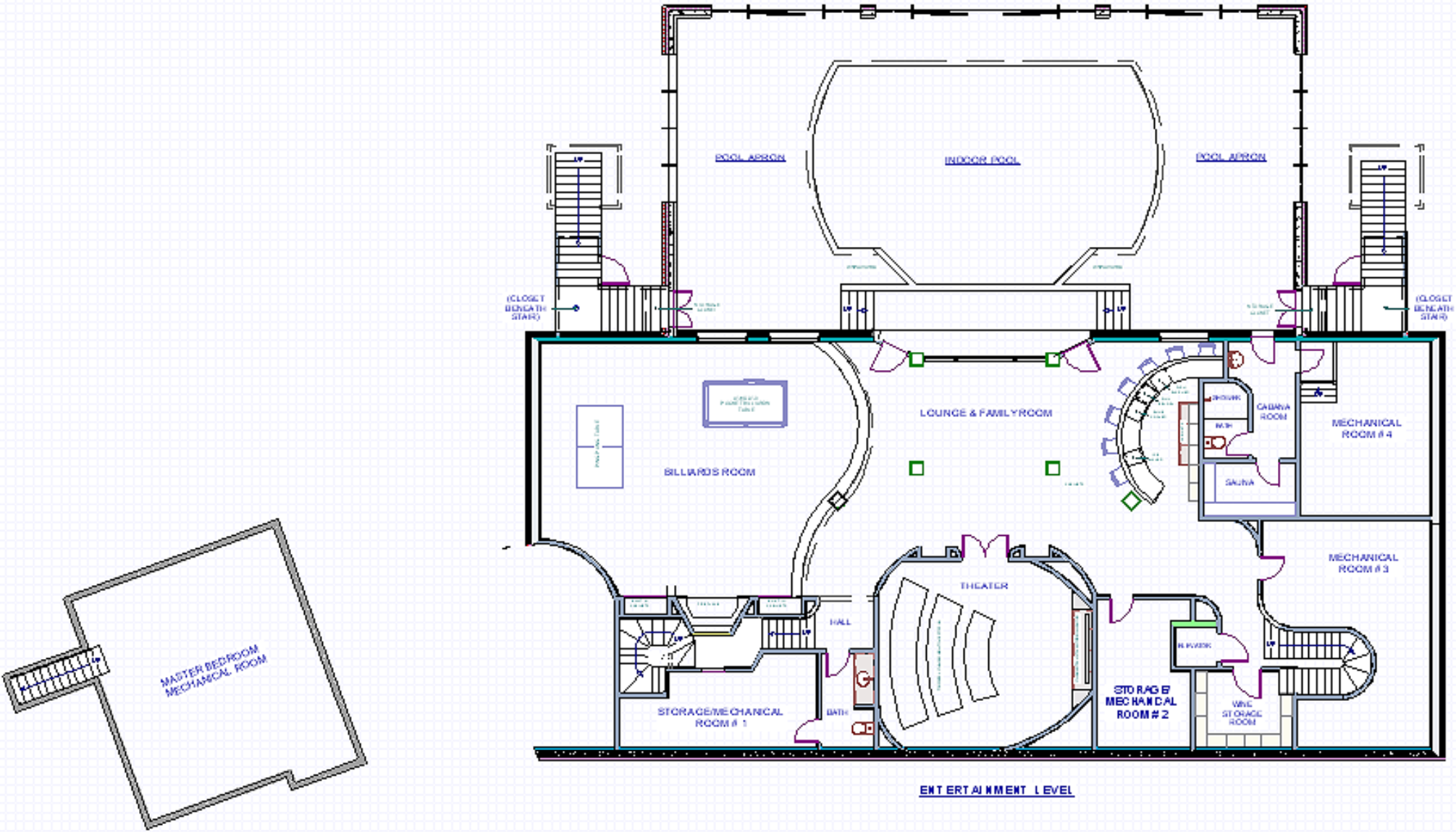
MAIN LEVEL FLOOR PLAN



SECOND LEVEL FLOOR PLAN



ENTERTAINMENT LEVEL FLOOR PLAN





Offered at \$16,000,000